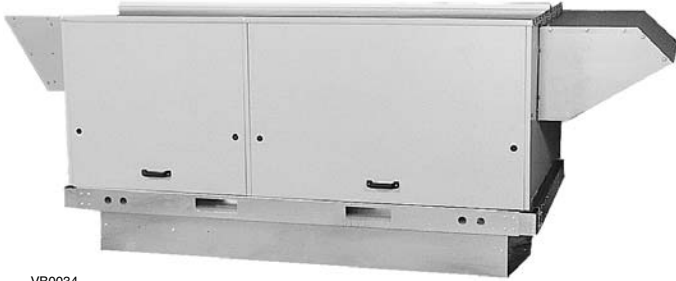


EXTERNAL HEAT RECOVERY VENTILATOR

Model 20LCe

Part no. 1620024



VB0034

EFFECTIVE VENTILATION WITHOUT SPACE LOSS

Today's businesses need to optimize every square inch without compromising on ventilation quality. Designed for rooftop applications, this unit delivers 2000 cfm (944 l/s) of ventilation air at 1" w.g. (250 Pa) of external static pressure.

The 20LCe features a plate to plate heat exchanger (available in polypropylene plastic or aluminum) providing sensible heat transfer, ideal for cold or dry climates.

- Outdoor installation
- Belt-driven blowers
- Durable pre-painted enamel housing

This product is designed to resolve Indoor Air Quality issues and to satisfy the ventilation requirements of ASHRAE 62 and other applicable building codes in an energy efficient manner. The 20LCe heat recovery ventilator saves on operating costs, decreases demand load and considerably reduces capital costs for heating equipment.

Available at:

Controls

- The basic control is made with terminal strips to select ventilation mode. For optional remote controls, the terminal strips will allow on/off control from remote contacts. Please note that the optional controls can only be installed with 2-speed units.
- Optional remote controls are:
 - Venta (off/min/max and dehumidistat) no. 40310
 - Basic (off/min/max and dehumidistat) no. 40210

Heat Recovery Core

Type: Plate to plate

Material: Polypropylene or aluminum (optional)

Sensible effectiveness: 56%

Servicing: Easily removable on co-extruded tracks for cleaning

Cross-leakage: Less than 1%

Warranty: 15-year warranty

Optional Features and Accessories

- Recirculation Defrost no. 14054
- Aluminum Core no. 04812
- Motor: 208/230/1/60, 1.5 hp, 2 speeds no. 04868
- Motor: 208/230/1/60, 2 hp, 1 speed no. 04813
- Insulated Roofcurb no. 205249
- Non Insulated Roofcurb no. 204972
- Flow Measuring Station no. 1605135

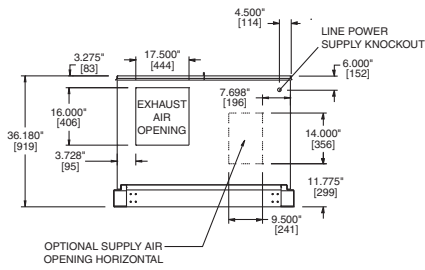
Requirements and Standards

- Complies with CSA C22.2 and UL 1812
- CETL and ETL approved
- Airflow data complies with AMCA 210 method of testing
- Insulation complies with NFPA 90A requirements for flame spread and smoke generation
- Polypropylene heat recovery core complies with UL standard 94-HB

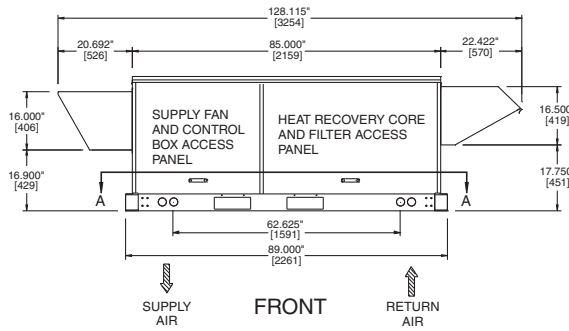
Warranty

The 20LCe unit is fully protected by a 2-year warranty on all parts, excluding heat recovery core.

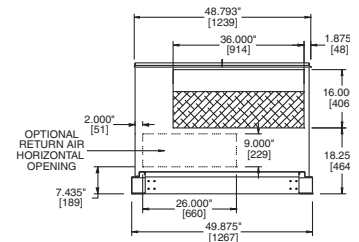
Dimensions and clearance: 20LCe



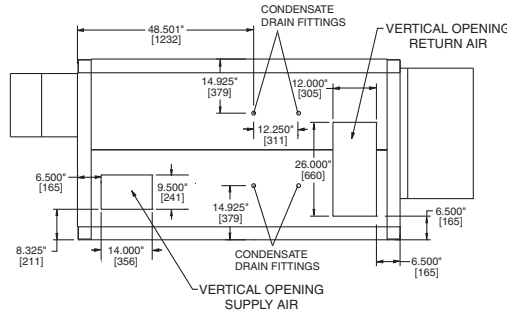
LEFT SIDE



FRONT



RIGHT SIDE

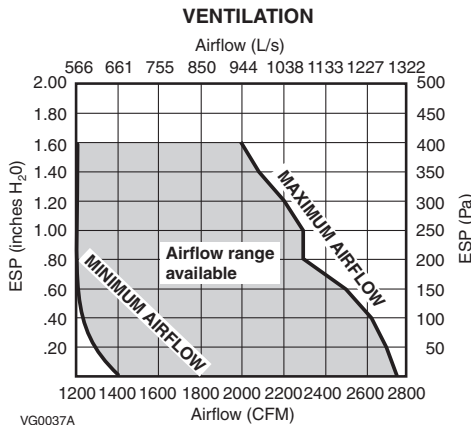


BOTTOM CROSS SECTION A-A

- NOTES: 1. A minimum of 26" is required from any obstructions for removal of plate heat exchanger, fans and filters.
2. Dimensions in brackets are in millimeters.

VK0030A

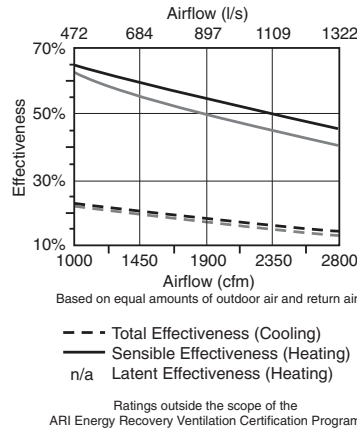
Ventilation Performances



VG0037A

- NOTES: 1. Airflow range is achieved by various pulley and motor combinations.
2. Airflow based on supply blower.

Energy Performances



Ratings outside the scope of the ARI Energy Recovery Ventilation Certification Program.

VG0067A

Model Number: PHE500-15.4H-15.3S-0.11

Model Number: AHE500-15.4H-15S-0.14

Type: Plate (Plate) Nominal Airflow: 530 (530) scfm

Pressure Drop: 0.86 (0.30) inches

Leakage Ratings

	Pressure Differential	EATR	OACF	Purge Angle or Setting
Test 1:	-5.00 (-3.00) inches	0% (0%)	1.00 (1.00)	N/A (N/A)
Test 2:	0.00 (0.00) inches	0% (0%)	1.00 (1.00)	N/A (N/A)
Test 3:	5.00 (3.00) inches	0% (0%)	1.00 (1.00)	N/A (N/A)

Thermal Effectiveness Ratings at 0" Pressure Differential

	Sensible	Latent	Total
100% Airflow Heating Condition:	58% (52%)	0% (0%)	38% (34%)
75% Airflow Heating Condition:	63% (58%)	0% (0%)	42% (38%)
100% Airflow Cooling Condition:	49% (46%)	0% (0%)	19% (18%)
75% Airflow Cooling Condition:	55% (52%)	0% (0%)	21% (20%)
	Net Sensible	Net Latent	Net Total
100% Airflow Heating Condition:	58% (52%)	0% (0%)	38% (34%)
75% Airflow Heating Condition:	63% (58%)	0% (0%)	42% (38%)
100% Airflow Cooling Condition:	49% (46%)	0% (0%)	19% (18%)
75% Airflow Cooling Condition:	55% (52%)	0% (0%)	21% (20%)



Energy recovery component certified in accordance with ARI Standard 1060-2001. Actual performance in packaged equipment may vary.

Specifications and Ratings

- Model: 20LCe
- Part number: 1620024 (with polypropylene core)
- Total assembled weight: 730 lb
- Dampers: Insulated spring return supply damper and insulated motorized exhaust damper
- Housing: Gray, pre-painted steel
- Hoods: Intake & exhaust included
- Defrost: Exhaust only
- Ports: Down supply discharge & bottom return air
- Filtration: Standard
- Motor: Single phase, 1.5 hp, 1 speed
- Unit electrical characteristics:
 - Voltage: 208 volts ac
 - Frequency: 60 Hz

Submitted by:	Date:	Project:
Quantity:	Model number:	Location:
	Remarks:	Architect:
		Engineer:
		Contractor:

